


Hivoduct

Compatible transmission

Druckluftkabel für die elektrische Energieübertragung



- Druckluftisolation**
- XLPE & SF₆ frei**
- Hohe Nennströme**
- Weniger Verluste**
- Niedrigste Magnetfelder**
- Nicht brennbar**
- Kompakt**
- Grabenlos verlegen**
- Passive Sicherheit**
- Einfacher Transport**
- 12 kV – 420 kV**

HIVODUCT AG
www.hivoduct.com

+41 79 458 62 45
info@hivoduct.com

We reserve the right to change specifications without notice.



Hivoduct

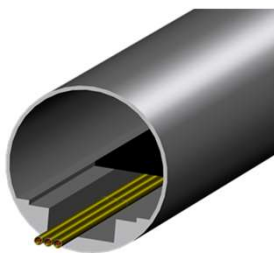
Compatible transmission

Hivoduct Druckluftkabel Produktübersicht und technische Daten

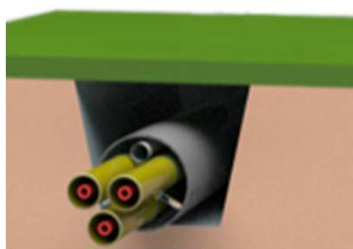
	G00 Series	G10 Series	G20 Series	G30 Series
Rated Voltage	12 - 52 kV	72 kV - 145 kV	170 kV - 300 kV	300 kV - 420 kV
Rated Current	500 - 4000 A	500 - 3150 A	500 A - 4000 A	1000 A - 5000 A
Transmission Capacity 3ph	<=450 MW	<=800 MW	<=2'000 MW	<=3'600 MW
Insulation Medium	Pressurized Air	Pressurized Air	Pressurized Air	Pressurized Air
Flange sealing	Double sealing	Double sealing	Double sealing	Double sealing
Enclosure design	Single phase	Single phase	Single phase	Single phase
Weight / 3ph (approx.)	70 kg/m	90 kg/m	130 kg/m	170 kg/m
Losses @ 1 kA avg. current (For 3ph per m Length)	32 W/m	32 W/m	25 W/m	18 W/m
Pipe diameter required for 3 ph including rollers	450 mm	630 mm	900 mm	1200mm
Trench Width x Depth (side-by-side, approx.)	1 m x 0.5 m	1 m x 0.5 m	1.3 m x 0.6 m	1.8 m x 1 m
Transport length, weight	< 6m, <500 kg	< 6m, <500 kg	< 6m, <700 kg	< 6m, <1100 kg
Earthing method	Solid grounding	Solid grounding	Solid grounding	Solid grounding

Installationsoptionen

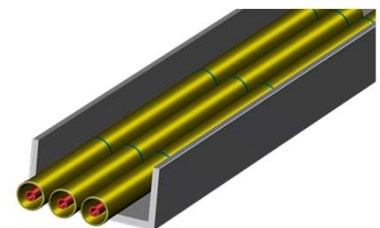
Tunnel



Rohr



Kabelkanal



HIVODUCT AG
www.hivoduct.com

+41 79 458 62 45
info@hivoduct.com

We reserve the right to change specifications without notice.